

M-C4

M-C3

M-C4

M-C3

M-C1

M-C2

M-C1

M-C2

S1 001

Begadou

42.76 m²

S1 003

Soute matériels

24.78 m²

S1 004

Soute matériels

26.72 m²

S1 005

Sous-station chauffage

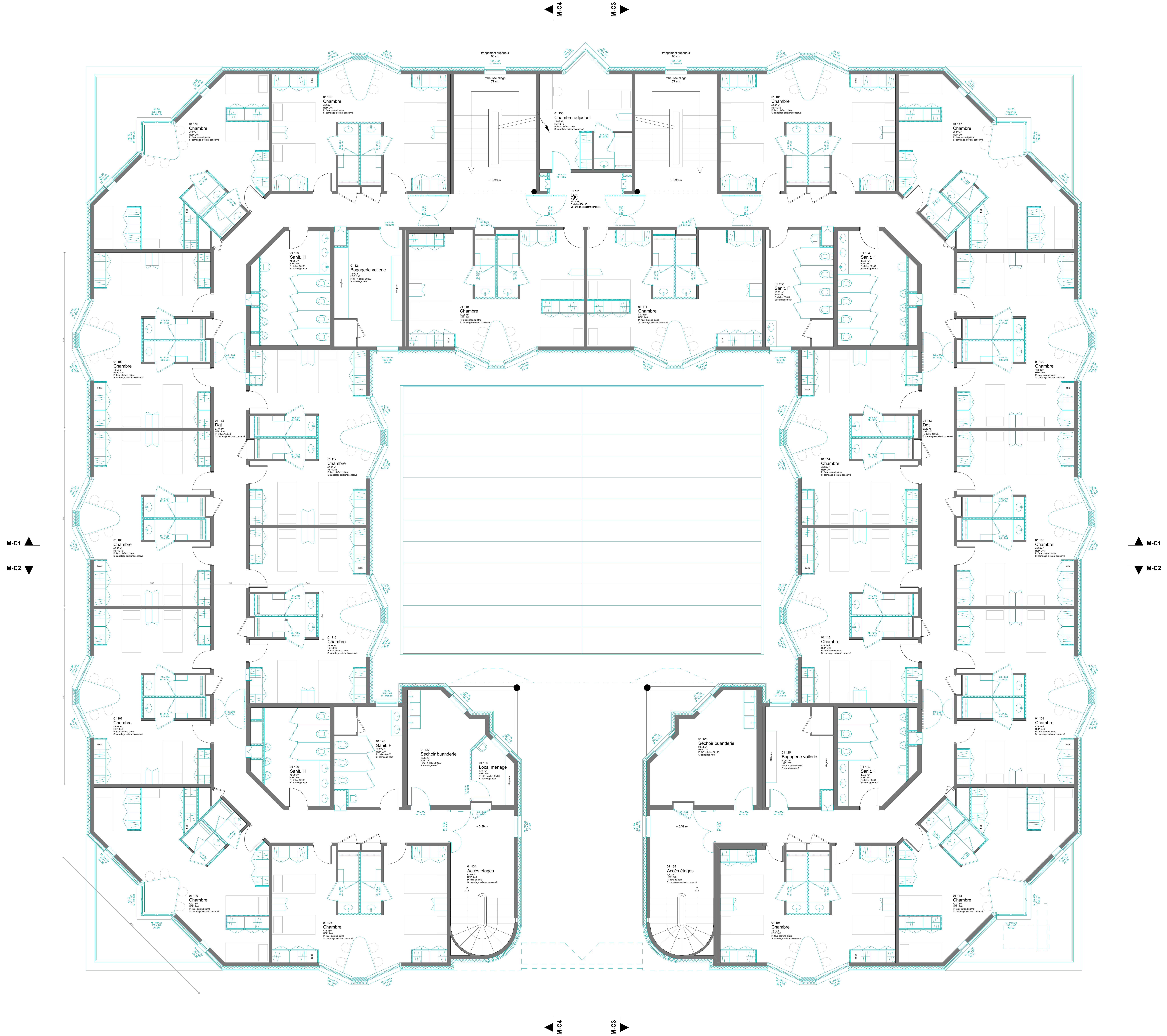
26.72 m²

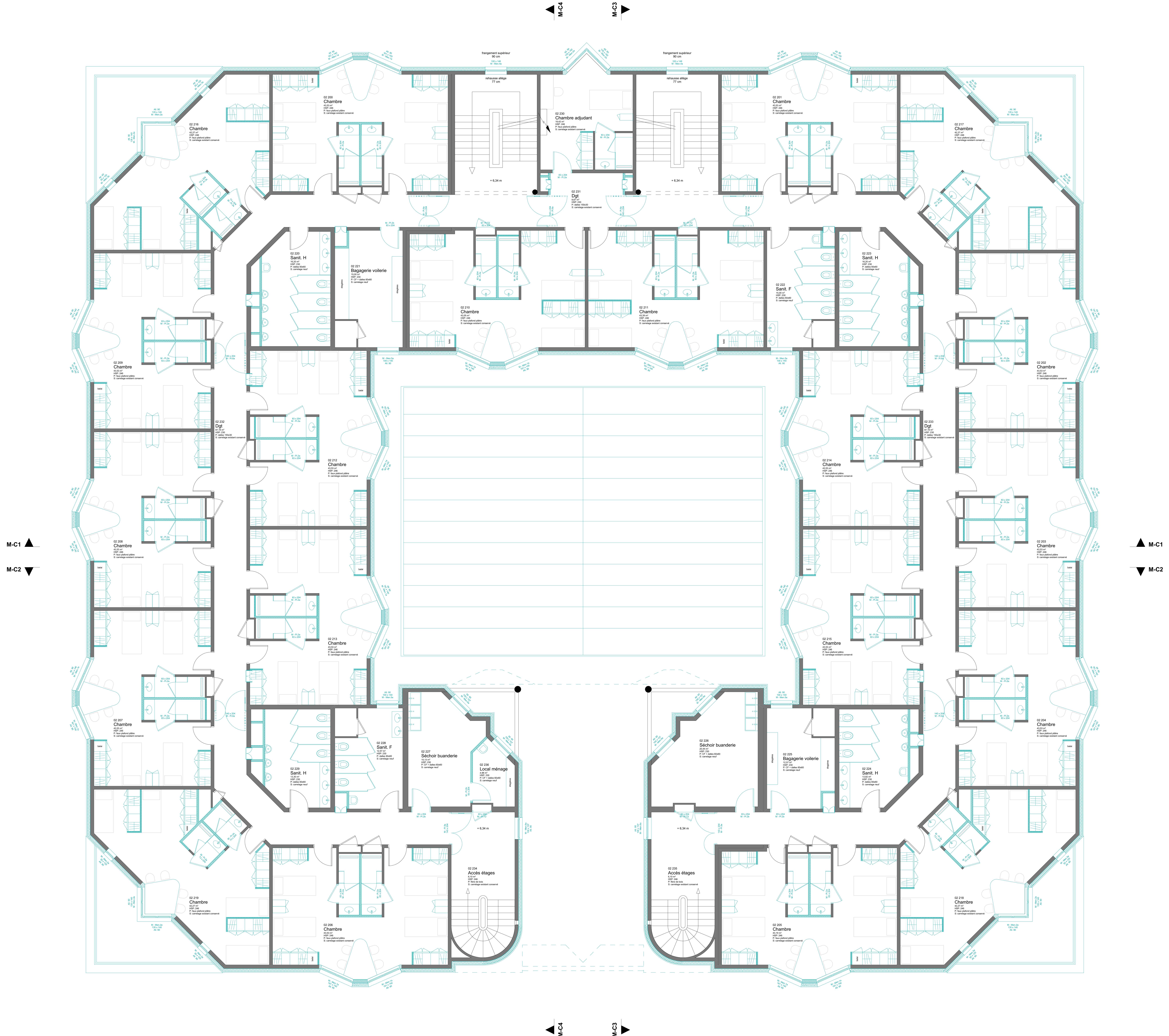
M-C1

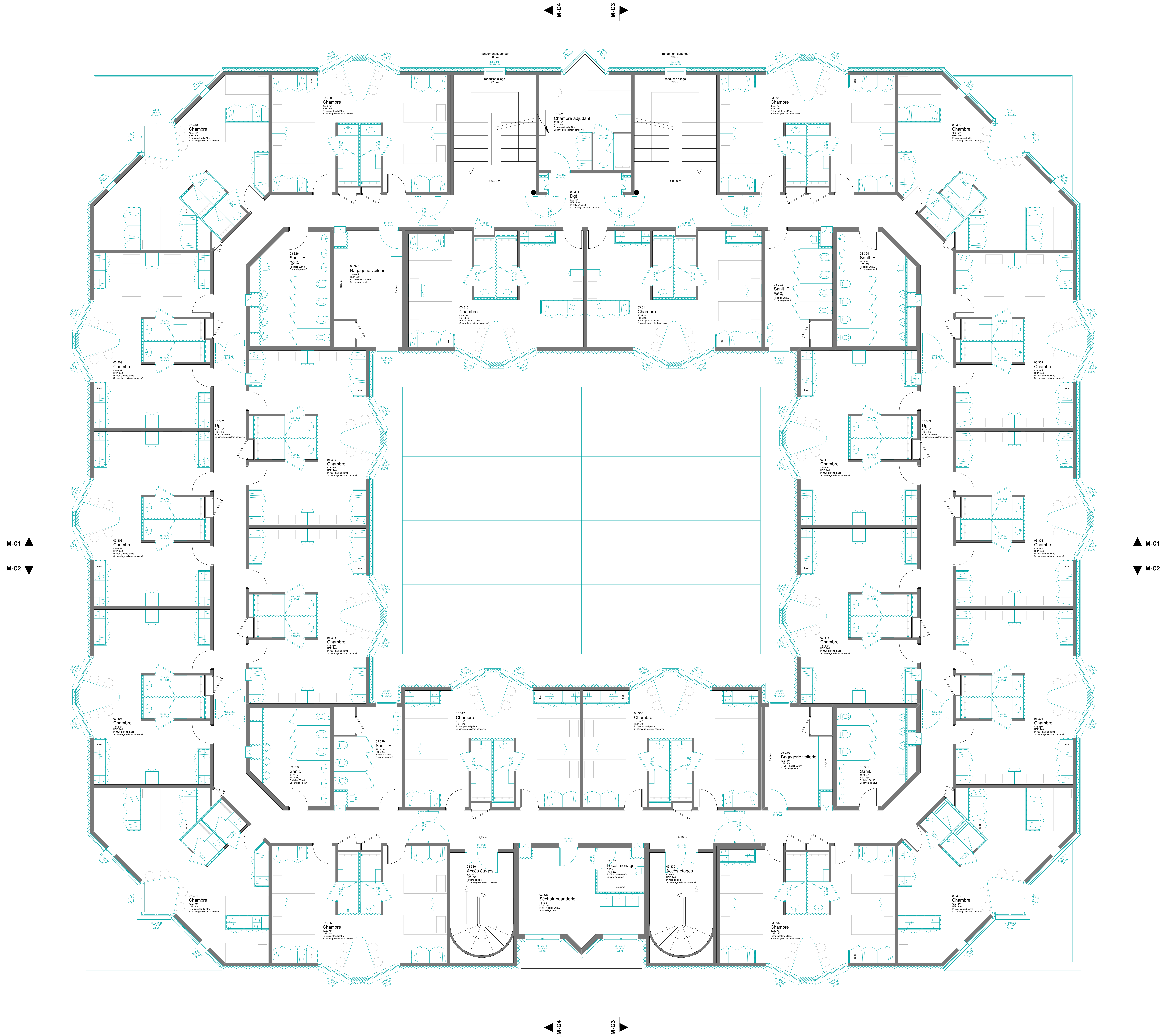
M-C2

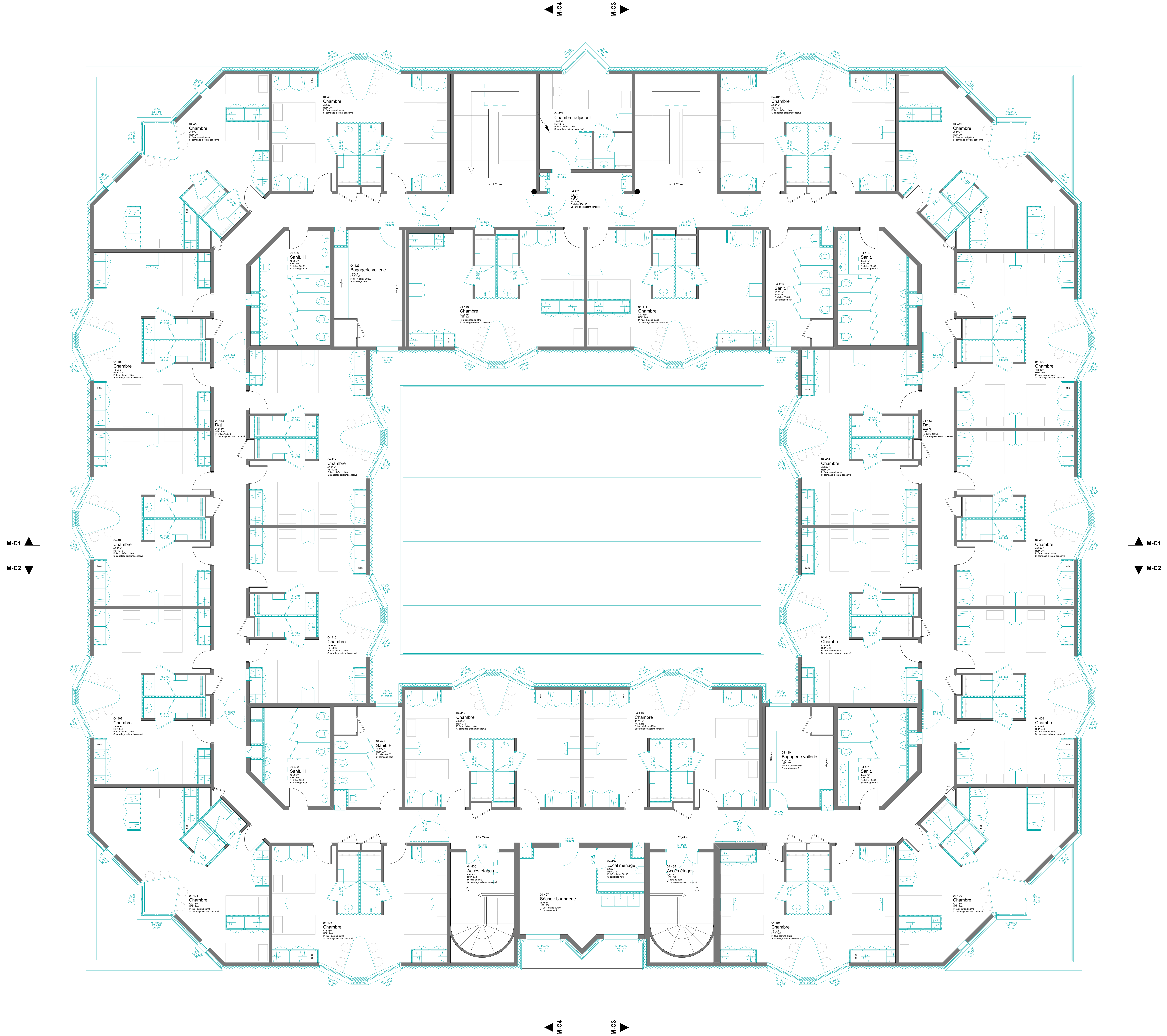
M-C1

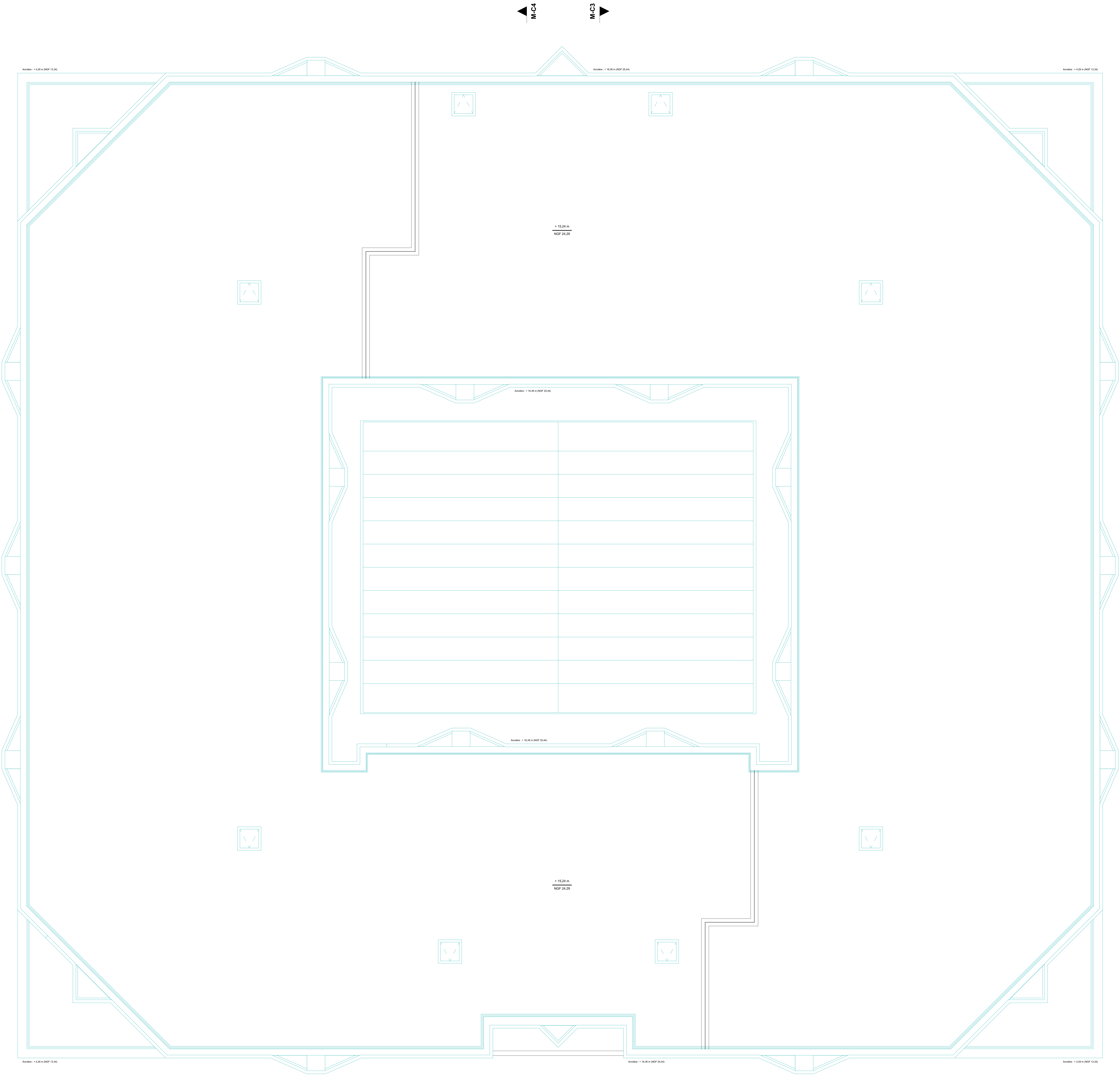
M-C2



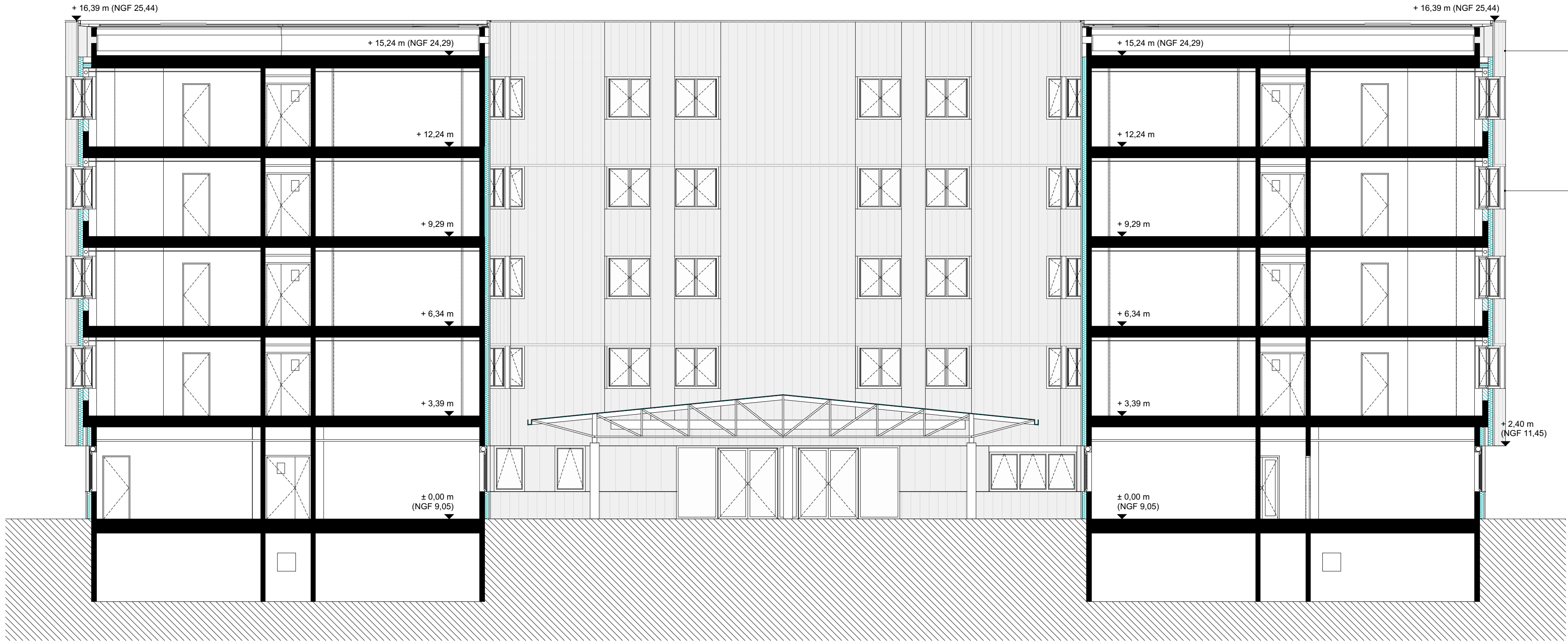








Toiture
+ 15,24 m
R+4
+ 12,24
R+3
+ 9,29 m
R+2
+ 6,34 m
R+1
+ 3,39 m
RDC
± 0,00 m NGF 9,05

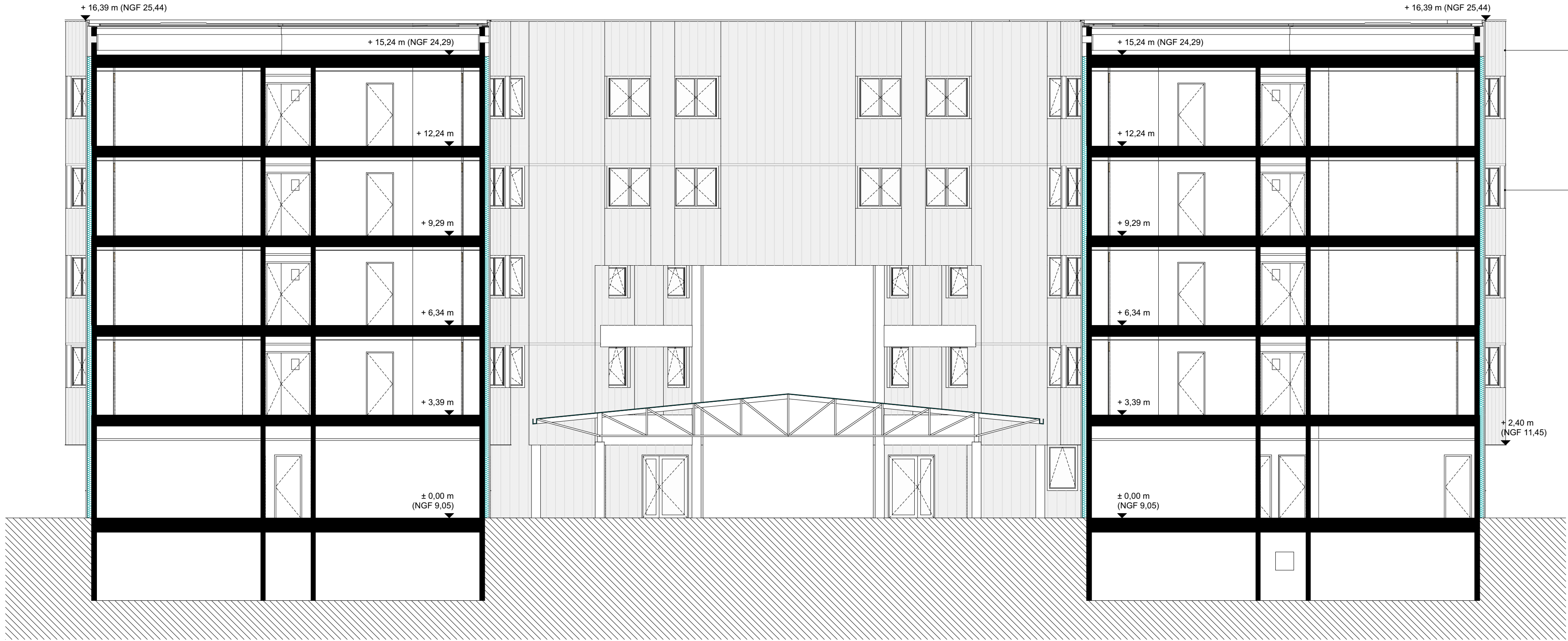


bardage métallique verticale
type lames ST d'ArcelorMittal ou équivalent
revêtement Sinea 85 ; coloris Palladium
lames 300 mm

menuiserie aluminium thermolaqué

Coupe M-C1

Toiture
+ 15,24 m
R+4
+ 12,24
R+3
+ 9,29 m
R+2
+ 6,34 m
R+1
+ 3,39 m
RDC
± 0,00 m NGF 9,05



bardage métallique verticale
type lames ST d'ArcelorMittal ou équivalent
revêtement Sinea 85 ; coloris Palladium
lames 300 mm

menuiserie aluminium thermolaqué

Coupe M-C2

Toiture
+ 15,24 m

R+4
+ 12,24

R+3
+ 9,29 m

R+2
+ 6,34 m

R+1
+ 3,39 m

RDC
± 0,00 m
NGF 9,05



Coupe M-C3

Toiture
+ 15,24 m

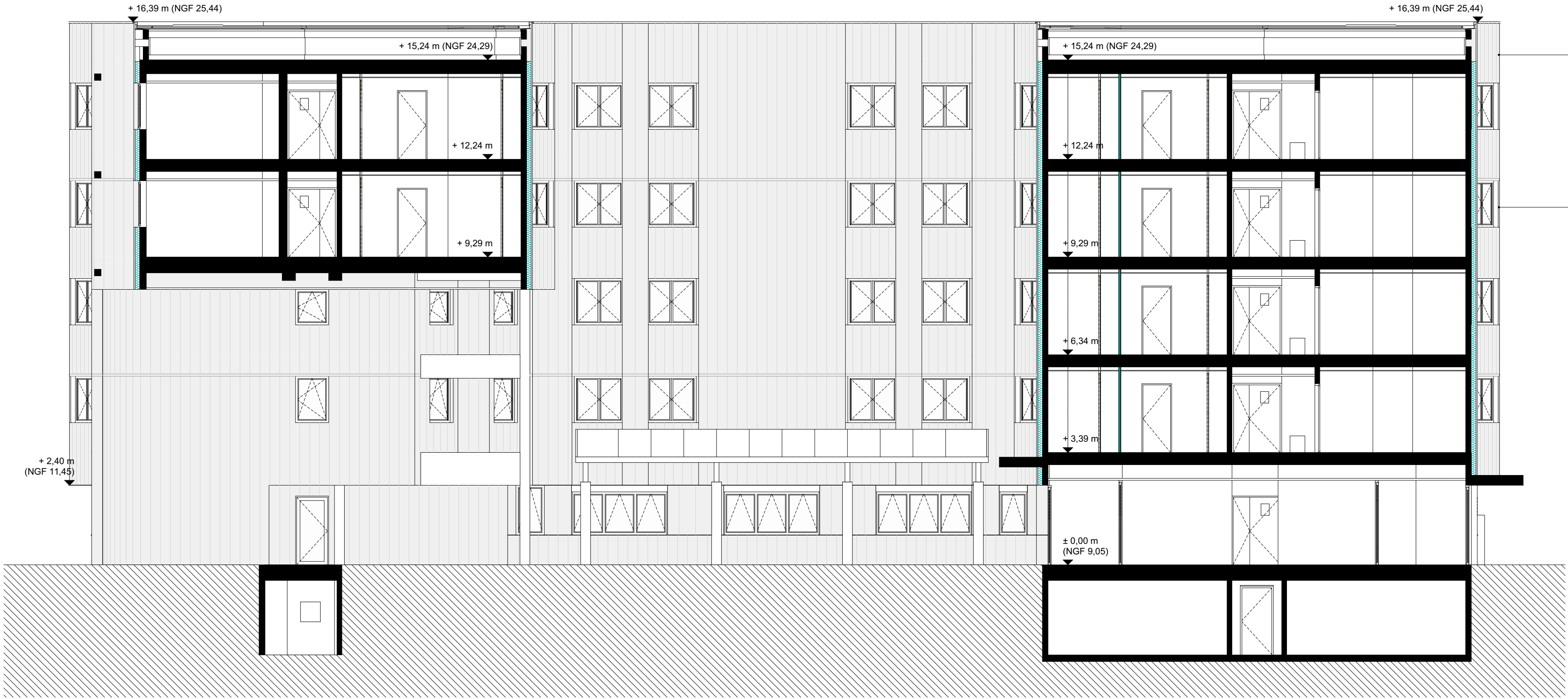
R+4
+ 12,24

R+3
+ 9,29 m

R+2
+ 6,34 m

R+1
+ 3,39 m

RDC
± 0,00 m
NGF 9,05



Coupe M-C4

Acrotère

+ 16,39 m

R+4

+ 12,24

R+3

+ 9,29 m

R+2

+ 6,34 m

R+1

+ 3,39 m

RDC

± 0,00 m

NGF 9,05



Acrotère

+ 16,39 m

R+4

+ 12,24

R+3

+ 9,29 m

R+2

+ 6,34 m

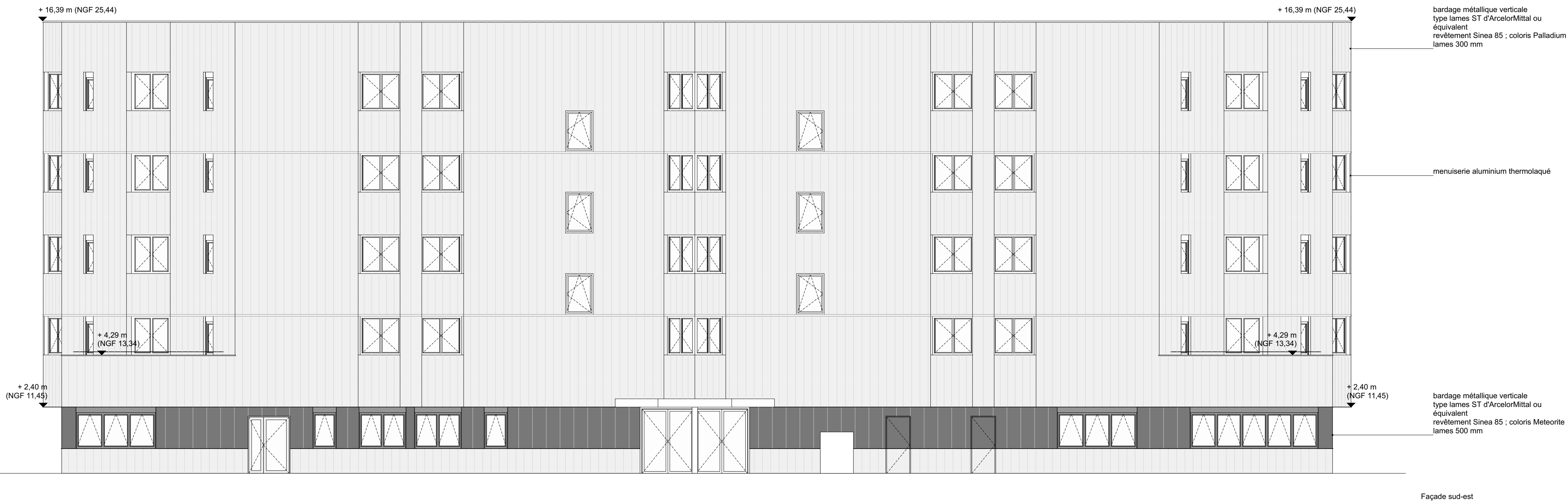
R+1

+ 3,39 m

RDC

± 0,00 m

NGF 9,05



Acrotère

+ 16,39 m

R+4

+ 12,24

R+3

+ 9,29 m

R+2

+ 6,34 m

R+1

+ 3,39 m

RDC

± 0,00 m
NGF 9,05



Acrotère

+ 16,39 m

R+4

+ 12,24

R+3

+ 9,29 m

R+2

+ 6,34 m

R+1

+ 3,39 m

RDC

± 0,00 m
NGF 9,05

